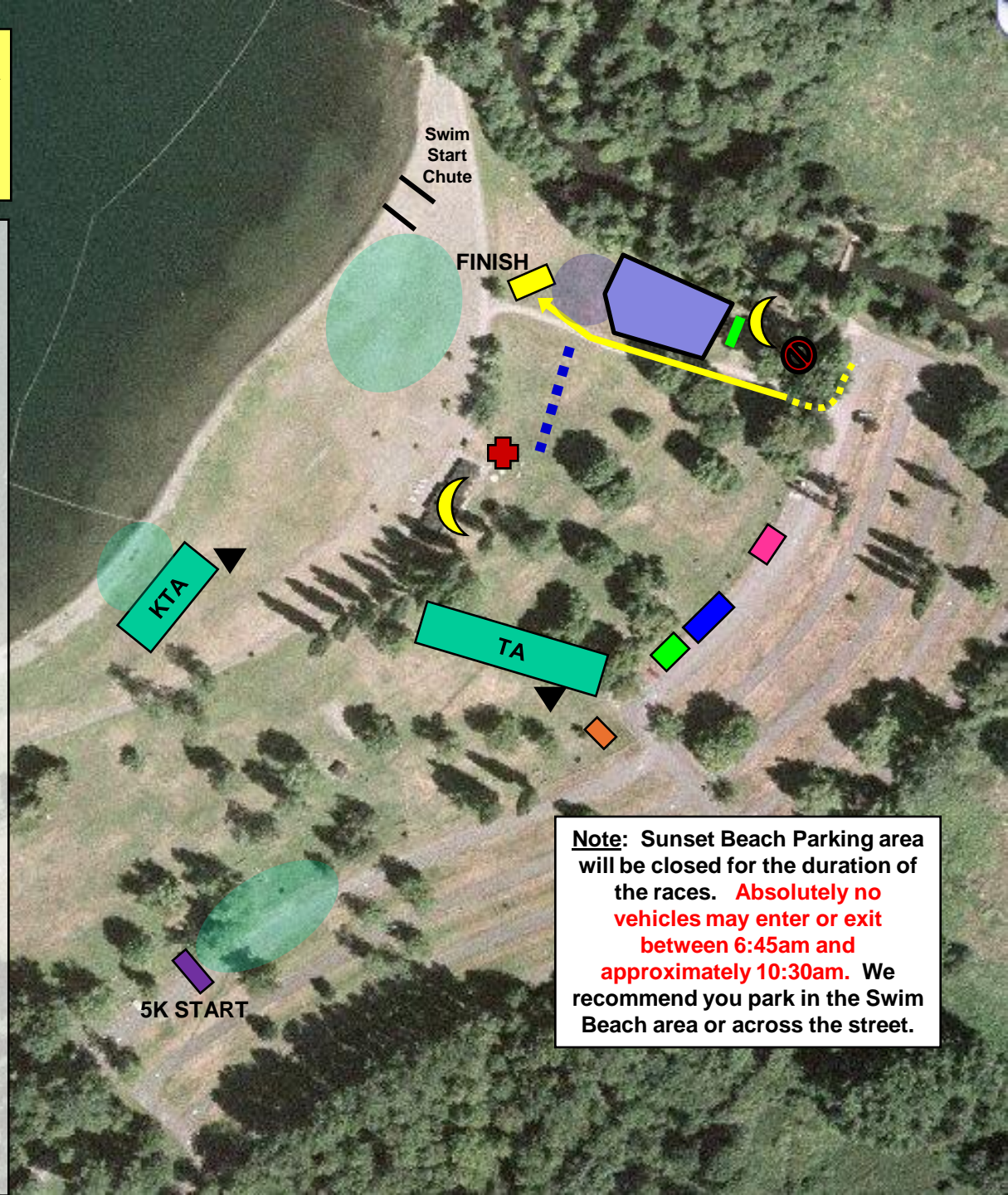


Issaquah Triathlon & 5K
Race Site
 (within Sunset Beach area)
Lake Sammamish State Park



- Packet Pick-up & Final Registration for 5K Run
- Volunteer Check-in
- Information Station / Lost & Found
- Bike Repair Station
- Portable toilets (and trash receptacles)
- Restrooms
- First Aid Station
- Areas for Course Overview meetings
- 5K Run Start Line
- Transition Area – Sprint Tri (and trash receptacles)
- Transition Area – Kids Tri
- Body Marking Stations for Sprint Tri and Kids Tri
- Finish Line for all courses
- Final section of route into Finish Line
- Post Race Area
 - ✓ Sponsor Booths . . . check 'em out!
 - ✓ Homemade cookies and fresh fruit . . . yummy!
 - ✓ Johnsonville Brats hot off the grill . . . more yum!
 - ✓ Trash/recycling receptacles...do your part!
- Preliminary results posting (attached to side of building facing water)
- Award and Raffle area
- Event Timing RV – no public access, please



Note: Sunset Beach Parking area will be closed for the duration of the races. **Absolutely no vehicles may enter or exit between 6:45am and approximately 10:30am.** We recommend you park in the Swim Beach area or across the street.